

bus times towards  
**Kirmington**

**Saturdays**

<b>Kirton in Lindsey</b> Queens Head	1004	1404			
<b>Kirton in Lindsey</b> Dunstan Hill	1007	1407			
<b>Redbourne</b> Red Lion	1014	1414			
<b>Hibaldstow</b> Post Office	1019	1419			
<b>Hibaldstow</b> The Nookings	1023	1155	1423	1555	
<b>Sturton</b> Gainsborough Lane	1027	1159	1427	1559	
<b>Scawby</b> Mill Lane	1029	1201	1429	1601	
<b>Brigg</b> Cary Lane [arrive]	1037	1209	1437	1609	
<b>Brigg</b> Cary Lane [depart]	0840	1040	1240	1440	1640
<b>Wrawby</b> Tunnel Road	0846	1046	1246	1446	1646
<b>Wrawby</b> Church	0848	1048	1248	1448	1648
<b>Barnetby</b> Church	0854	1054	1254	1454	1654
<b>Melton Ross</b> Melton Hall	0858	1058	1258	1458	1658
<b>Humberside Airport</b> Main Entrance	0901	1101	1301	1501	1701
<b>Kirmington</b> Limber Road	0904	1104	1304	1504	1704

for weekday services to Kirton, Brigg and Kirmington, please see the service 4 & 94 timetables

bus times towards  
**Kirton in Lindsey**

**Saturdays**

<b>Kirmington</b> Limber Road	0905	1105	1305	1505	1705
<b>Humberside Airport</b> Main Entrance	0909	1109	1309	1509	1709
<b>Melton Ross</b> Melton Hall	0913	1113	1313	1513	1713
<b>Barnetby</b> Church	0917	1117	1317	1517	1717
<b>Wrawby</b> Church	0925	1125	1325	1525	1725
<b>Wrawby</b> Tunnel Road	0926	1126	1326	1526	1726
<b>Brigg</b> Cary Lane [arrive]	0932	1132	1332	1532	1732
<b>Brigg</b> Cary Lane [depart]	0940	1140	1340	1540	
<b>Scawby</b> Mill Lane	0948	1148	1348	1548	
<b>Sturton</b> Gainsborough Lane	0949	1149	1349	1549	
<b>Hibaldstow</b> The Nookings	0954	1154	1354	1554	
<b>Hibaldstow</b> Post Office	0955	1355			
<b>Redbourne</b> Red Lion	0958	1358			
<b>Kirton in Lindsey</b> Queens Head	1003	1403			

for weekday services to Kirton, Brigg and Kirmington, please see the service 4 & 94 timetables



## What's changed?

There are some minor timetable alterations between Brigg and Kirton in Lindsey and return.  
The 0905 journey from Kirmington to Kirton in Lindsey will now serve The Nookings at Hibaldstow.



buy your tickets and see where your bus is with the myTrip app!

# Route map

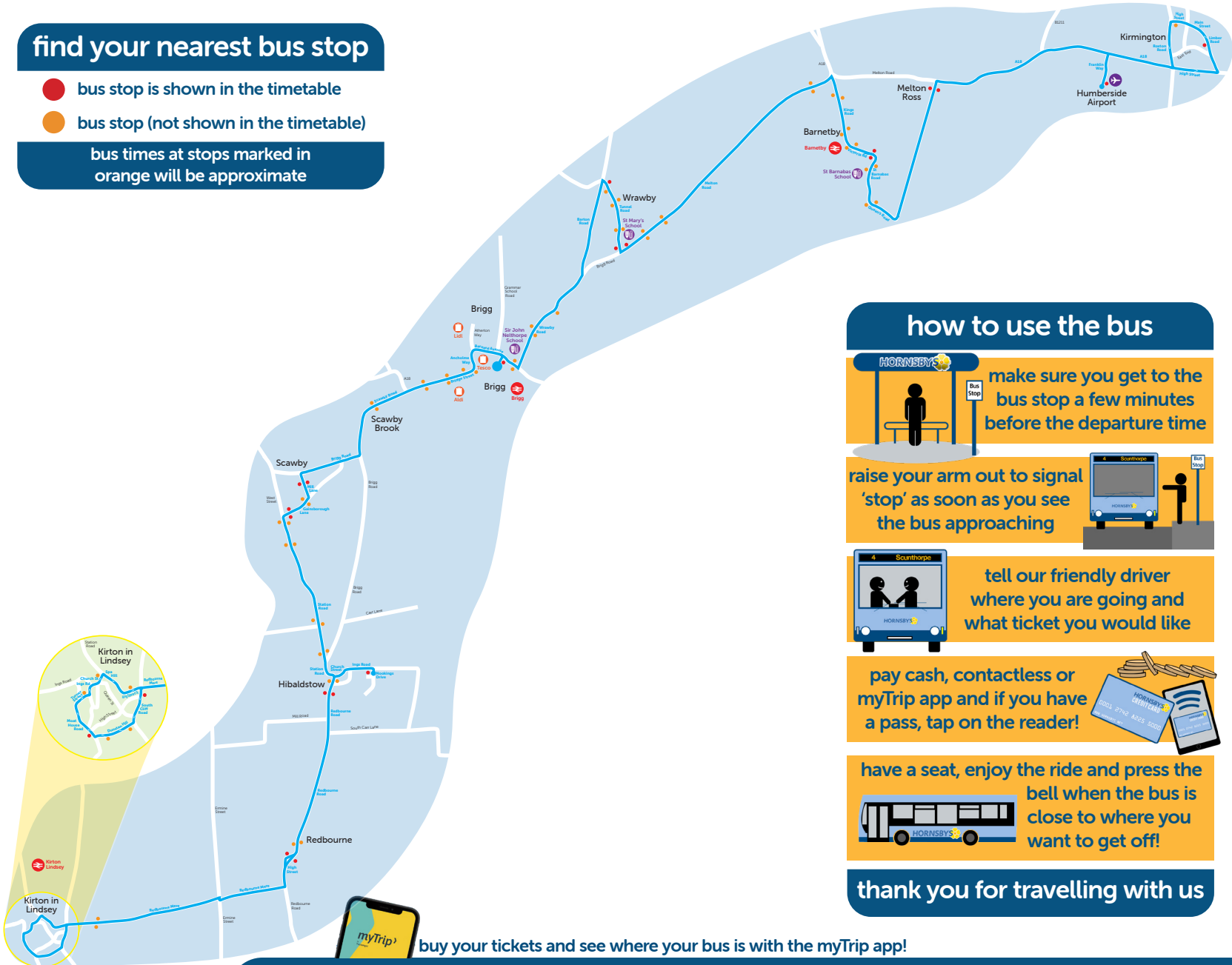
services between  
**Kirton in Lindsey • Hibaldstow • Brigg • Barnetby • Kirmington**

C4

this service is funded by the Department for Transport's Bus Service Improvement Plan for North Lincolnshire

## find your nearest bus stop

- bus stop is shown in the timetable
- bus stop (not shown in the timetable)
- bus times at stops marked in orange will be approximate



## how to use the bus

**make sure you get to the bus stop a few minutes before the departure time**

**raise your arm out to signal 'stop' as soon as you see the bus approaching**

**tell our friendly driver where you are going and what ticket you would like**

**pay cash, contactless or myTrip app and if you have a pass, tap on the reader!**

**have a seat, enjoy the ride and press the bell when the bus is close to where you want to get off!**

**thank you for travelling with us**

## download the MyTrip app!

**live bus tracking**

**buy your tickets to travel**

**journey planning**

**bus facilities and occupancy info**

**visit your app store or go to <https://mytrip.today>**

## join us for your next day out!

**A trip to the seaside or a day out shopping, we have lots of days out for you to enjoy!**



**visit [hornsby.net](https://hornsby.net) for more details**



buy your tickets and see where your bus is with the myTrip app!

valid from  
2nd January 2025

get in touch with us • phone 01724 282 255 • email [info@hornsbytravel.co.uk](mailto:info@hornsbytravel.co.uk) • social media @hornsbytravel

